

These instructions and the images herein are proprietary. Any unauthorized reproduction is prohibited.

## Wilwood Front Brake Kit Installation

**Immediately upon delivery, open all packages and check the contents of the shipment. Report any issues directly to SCP within 15 days. After 15 days, SCP will not be responsible for missing or damaged items.**

### INSTALLATION

Congrats on your purchase of the Small Car Performance Wilwood Front Brake kit. With this kit you'll have the biggest piston area bolt on brakes for Vanagons on the market. There are some differences in the installation depending on whether your van is early 2WD, late 2WD, or 4WD. After installation it is critical that you bed the brakes. Please follow the link to the Wilwood bedding procedure at the end of this document. These instructions are written for one side. Installation is mirrored for the opposite side of the van.

1. Install your backing plate using the 3 pan head phillips screws in your kit. There is a left and a right. Choose whichever way you want the SCP logo to face.



2. Install wheel bearings into hub if you did not choose to have it done prior to shipment. If you need help with this step there are plenty of videos on Youtube. Tooling to do this can be rented at your FLAPS.
3. Install your axle washer and axle nut. Snug the nut up, then slightly loosen it. Make sure there isn't too much play, then peen the nut. If

These instructions and the images herein are proprietary. Any unauthorized reproduction is prohibited.

## Wilwood Front Brake Kit Installation

you have questions on this step, refer to your Bentley manual. If you don't have a Bentley manual, they are available for sale on our site.



4. It's now time to prep your calipers.

*Syncro:* You will receive a 90-degree brake line fitting. The 1/8 NPT male side of this fitting must be threaded into the back of the caliper with some kind of pipe thread sealant on it like Teflon tape or liquid flange sealant. The fitting needs to be tightened so that it stops with the outlet inline with the caliper pointing towards the knuckle. You can put it in loosely at this stage and get it into position after caliper installation if you prefer.

*2WD:* You will receive a straight brake line fitting. The 1/8 NPT male side of this fitting must be threaded into the back of the caliper with some kind of pipe thread sealant on it like Teflon tape or liquid flange sealant.



These instructions and the images herein are proprietary. Any unauthorized reproduction is prohibited.

## Wilwood Front Brake Kit Installation

5. Remove the allen socket bolt that retains that brake pad sliders.



6. Install the brake pads onto the sliders then reinstall allen socket bolt.





These instructions and the images herein are proprietary. Any unauthorized reproduction is prohibited.

## Wilwood Front Brake Kit Installation

7. Now to install the caliper carrier brackets. This installation will vary depending on your van. There is a right and a left bracket. The SCP logo should face up. The brackets will only fit one way. Please follow the section that applies to you below.

*Early 2WD:* Your spindles will have threaded 14mm holes. You'll attach the brackets using these holes and the provided aluminum bushings. Each hole should have a bolt, washer and bushing. Torque to 120 ft-lbs.

*Late 2WD:* Your spindles will have 16mm through holes. You'll attach your brackets using these holes. Each should have a bolt, nut, and a washer under both the nut and the bolt head. Torque to 150 ft-lbs.

*Syncro:* Syncro owners will follow the same steps as a late 2WD Vanagon above. However, because the hubs of a Syncro are pressed into the wheel bearings there is variation in their cross-car location. We include shims in the kit to account for this. These shims go in between the caliper and bracket. However, if you prefer not to shim you can press/pull the hub in/out of the bearing to get it's positioning correct. Continue with the installation to get an idea of how much you need to move the hub, then adjust hub, and continue with installation.



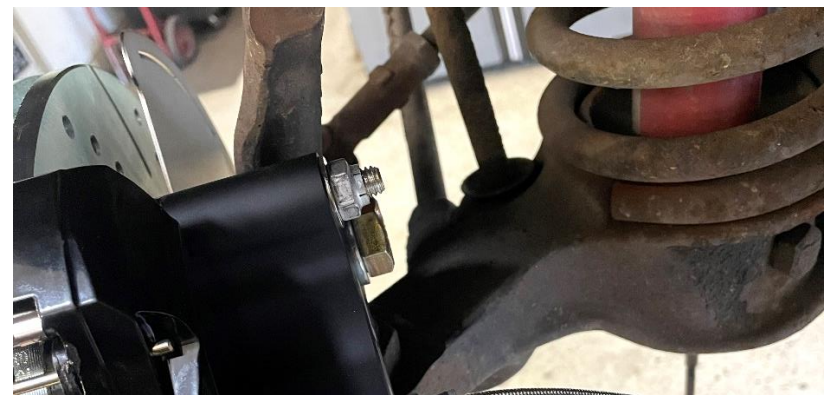
These instructions and the images herein are proprietary. Any unauthorized reproduction is prohibited.

## Wilwood Front Brake Kit Installation

8. The disc, caliper assembly, and 3/8" bolts/washers must be installed as one assembly. Insert the 3/8" bolts with washers under their heads into the calipers pointing towards the inside of the van. Slide the caliper assembly over the disc. Then, install the assembly as shown to the right. You are aligning all 5 wheel studs and both 3/8" bolts so this can be a bit finicky.



9. Install a 3/8" washer and a vibration resistant lock nut on each of the 3/8" bolts. Torque to 35 ft-lbs.



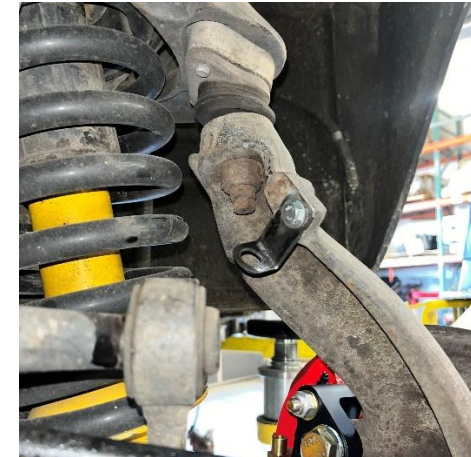
These instructions and the images herein are proprietary. Any unauthorized reproduction is prohibited.

## Wilwood Front Brake Kit Installation

10. Install the female to female brake line union to the male end of your stainless steel brake hose.



11. You must now install the provided brake line bracket. Syncro Vanagons will use the existing 6mm threaded hole on the back of the knuckle to attach this bracket. 2WD Vanagons are year dependent. Early Vanagons may already have a bracket hanging down from the ball joint. If this bracket is present then it can be reused. If now bracket is present, install the provided bracket under the ball joint nut.

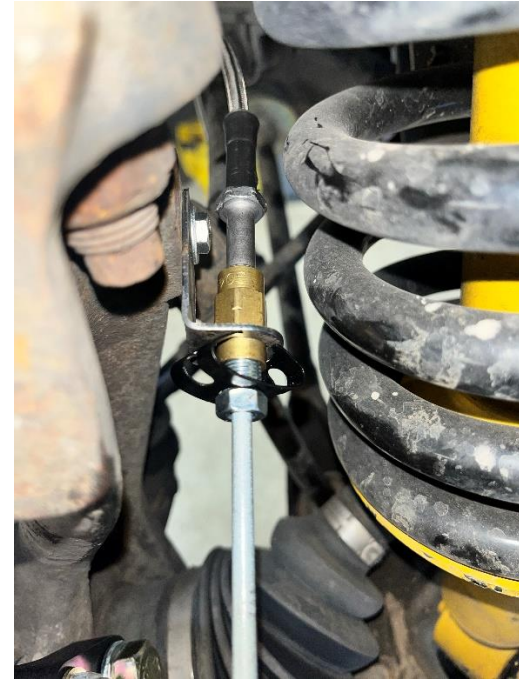




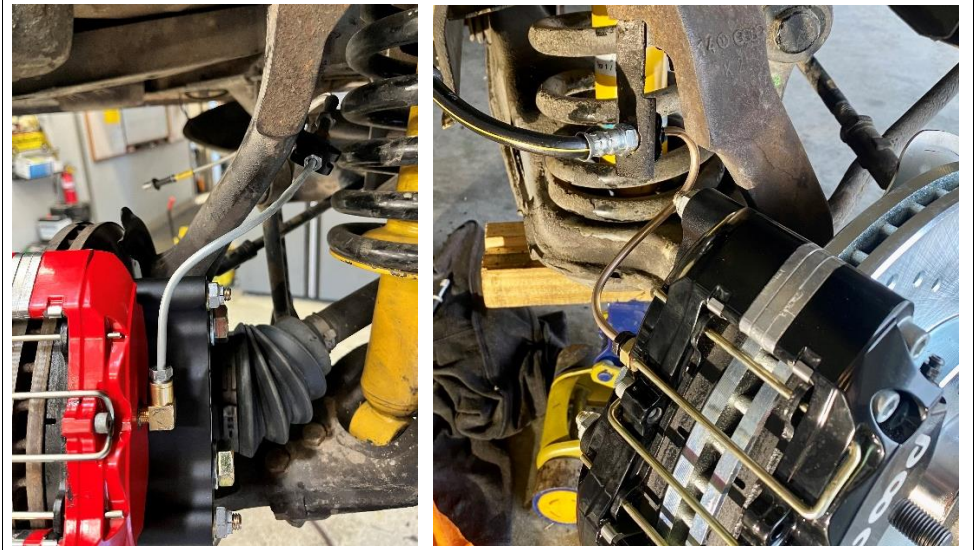
These instructions and the images herein are proprietary. Any unauthorized reproduction is prohibited.

## Wilwood Front Brake Kit Installation

12. Thread the hard brake line into the brake line union with a brake line spring on the hardline side. A Syncro example is shown to the right. 2WD vans will assembly in the same way but the bracket is different.



13. Now bend the hardline and thread it into the fitting installed in the caliper. A Syncro example is shown in the left image and a 2WD example is shown in the right image.  
Note: The 2WD shows a rubber hose but your setup will use the stainless hose with the brake line union.



These instructions and the images herein are proprietary. Any unauthorized reproduction is prohibited.

## **Wilwood Front Brake Kit Installation**

**Important:** You must now bed your brakes. Doing so wears the surface of your pads to ensure safe and reliable braking. The link to the Wilwood procedure is below.

<https://www.wilwood.com/Pdf/Misc/Pad and Rotor Bedding Steps.pdf>