

These instructions and the images herein are proprietary. Any unauthorized reproduction is prohibited.

METAL DIPSTICK INSTALLATION INSTRUCTIONS

Immediately upon delivery, open all packages and check the contents of the shipment. Report any issues directly to SCP within 15 days. After 15 days, SCP will not be responsible for missing or damaged items.

HARDWARE

Supplied

- Metal dipstick assembly

Not Supplied

- RTV Sealant
- Sheet metal screw or rivet nut/fastener

TOOLS REQUIRED

- Drill or rivet nut tool

INSTALLATION TIPS

- Ensure the engine oil has been drained before dipstick installation.
- The bracket that comes attached to the dipstick can be secured to the van using a sheet metal screw or a rivet nut and a bolt. Our mechanics tend to use the later method as it provides a cleaner finish and prevents the bracket from swiveling about the fastener.

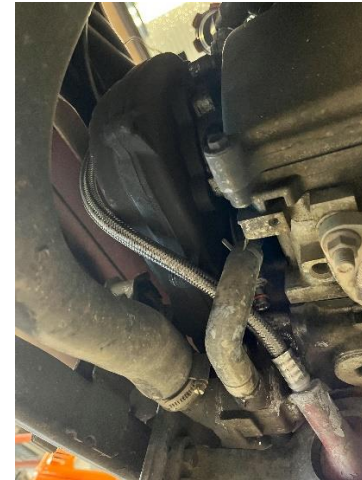
1. Apply a bead of RTV just above the second o-ring on the oil pan side of the dipstick tube. See image to the right for example.



These instructions and the images herein are proprietary. Any unauthorized reproduction is prohibited.

METAL DIPSTICK INSTALLATION INSTRUCTIONS

2. Route the dipstick as shown to the right then insert its end into the oil pan. Push and twist the dipstick tube until it has fully seated. Then, run your finger around the bead of RTV to ensure it is fully sealed off.



3. Secure the dipstick bracket to the van so that it is accessible from the license plate hatch. The bracket can be secured with a bolt and rivet nut or a self-tapping screw. The example to the right shows a self-tapping screw install.



4. Fill with 5 quarts of oil.

**CONGRATULATIONS!
YOU'RE DONE.**

INSTRUCTIONS FOR USE

With clean oil it is best to rely on the dipstick's thru holes to view oil level. Follow the instructions below.

These instructions and the images herein are proprietary. Any unauthorized reproduction is prohibited.

METAL DIPSTICK INSTALLATION INSTRUCTIONS

1. Remove the dipstick, wipe it off, then blow out all 5 holes so that they are free of oil.
2. Insert the dip stick and rotate it 360 degrees 2 to 3 times.
3. Remove the dipstick and hold it up to a light. All 5 holes should be full of oil when the oil level is correct. When just the bottom hole is full you are about a quart low.

With dirty oil you may not need to rely on the thru holes. Simply look to see that the oil is up to the 5th hole on the stick.