

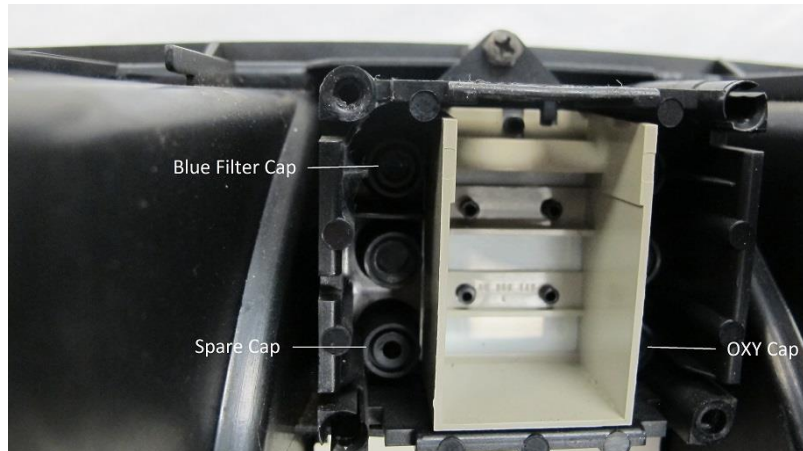
Foil Installation Notes

Please be careful cutting open the protective wrapping. Hold the package up to the light to see where it is safe to cut with scissors.

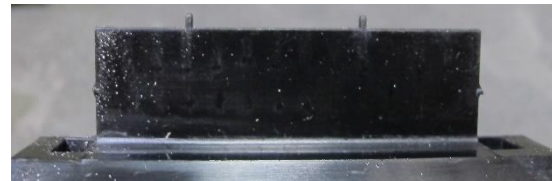
**** PLEASE NOTE**** If you need to detach the connectors, resist the temptation to pull by the foil. Use needle nose pliers to gently tug on the gold-plated pins.

1. **Start by removing the exiting blue foil.**

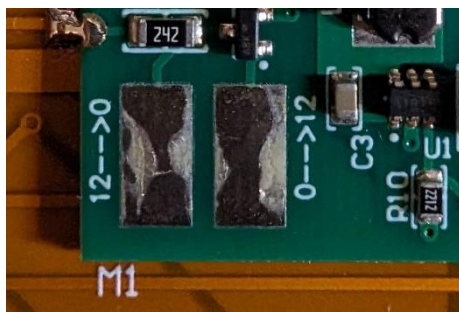
Depending on how many LEDs your foil originally had, you may have to remove one or two blanking caps. There are a couple of ways to do this. You can remove the LED holder and push the caps from the front but, as the plastic is quite brittle, a better approach is inserting a #6 wood screw in the back, turn to engage part of the thread, and pull the cap out. You will have to remove the blue filter too which is used on the high beam bulb. This filter will probably drop out. Blue LEDs did not exist at the time of vehicle manufacture, so a small “grain of wheat” bulb was used with a blue filter.



2. **When installing the new foil, first wrap the pre-folded edge connector around the plastic form, centering the foil on the form and snap the retaining clip in place.**



There is a small “bridge” that needs to be cut (with scissors) located at the 4-pin tachometer connector.



To make use of the spare yellow LED in the previously unused 6th position, solder a suitably sized wire such as 20-24awg to the square pad highlighted in the photo.

Applying 12V to the “0→12 solder pad illuminates the yellow LED. Applying a ground potential (active low) to the 12→0 pad will turn on the LED. Use one OR the other solder pads depending on your application

Any questions, please do not hesitate to contact me at greg@pathfinderdesigns.com