



These instructions and the images herein are proprietary. Any unauthorized reproduction is prohibited.

## **AUTOMATIC TRANSMISSION COOLER FAN INSTALLATION INSTRUCTIONS**

*Immediately upon delivery, open all packages and check the contents of the shipment. Report any issues directly to SCP within 15 days. After 15 days, SCP will not be responsible for missing or damaged items.*

### **HARDWARE**

- |   |   |
|---|---|
| <ul style="list-style-type: none"> <li>• (1) A/T COOLER AND FAN</li> <li>• (1) 10 AMP ATO FUSE</li> <li>• (1) 14 GAUGE FUSE HOLDER</li> <li>• (1) TEMPERATURE SENSOR</li> <li>• (2) 90 DEGREE A/T FITTING</li> <li>• (2) 12MM A/T COOLER FITTING</li> </ul> | <ul style="list-style-type: none"> <li>• (2) -6AN x 5/8" MALE ADAPTER</li> <li>• (2) -6AN FEMALE x 3/8" BARB FITTING</li> <li>• (2) 5/16" CONNECTING RING</li> <li>• (2) COPPER WASHER 12 X 16MM</li> <li>• (6) SELF TAPING SCREW 8 X 3/4"</li> <li>• (7) 14 GAUGE WIRE (FOOT)</li> </ul> |
|---|---|

### **TOOLS REQUIRED**

- 5/6" NUT DRIVER
- 7/16" SOCKET AND WRATCHET
- 5/8" OPEN ENDED WRENCH
- 11/16" OPEN ENDED WRENCH
- 3/4" OPEN ENDED WRENCH
- 1 AND 1/8" OPEN ENDED WRENCH
- WIRE CUTTER, CRIMPER, STRIPPER

### **NOT INCLUDED**

- WIRE COVER
- THREAD SEALANT

### **INSTALLATION TIPS**

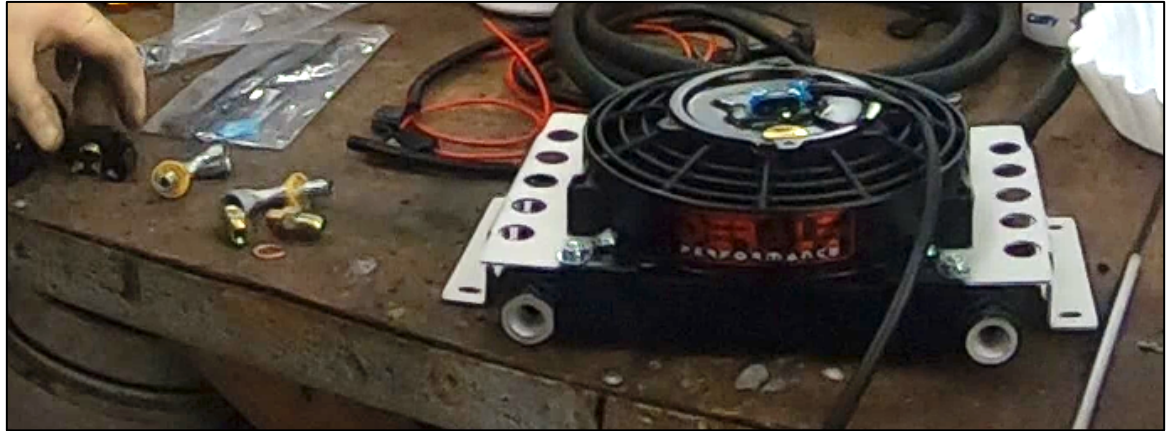
- Use copper washers for ALL transmission fittings.
- Cooler fittings are NPT. Do not force or over tighten. This can damage the cooler.

These instructions and the images herein are proprietary. Any unauthorized reproduction is prohibited.

## **AUTOMATIC TRANSMISSION COOLER FAN INSTALLATION INSTRUCTIONS**

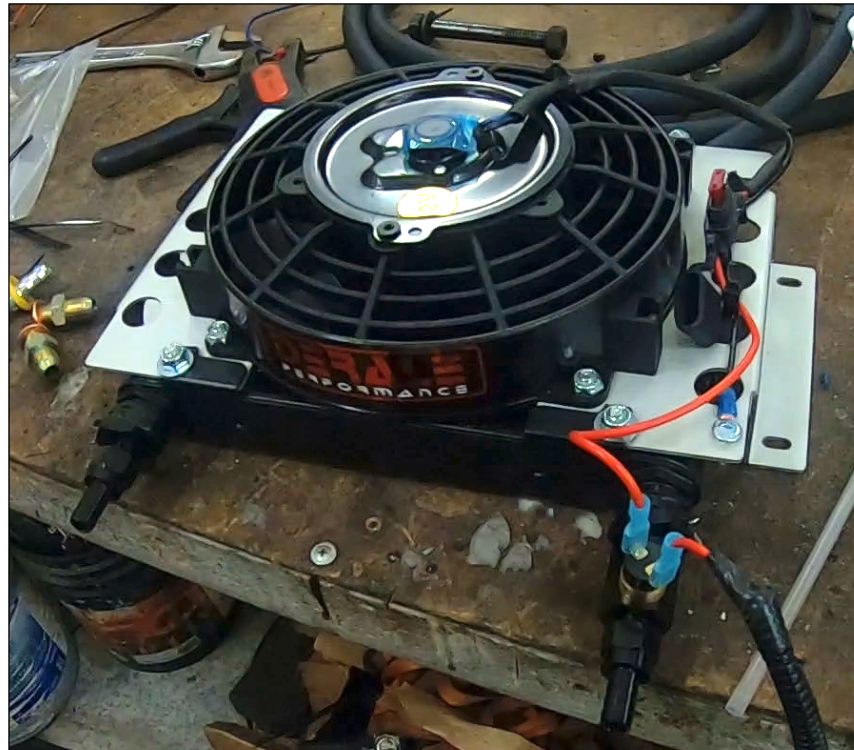
### **ATTACH FITTINGS**

1. Install Temperature Sensor to the fitting on hot side of the cooler fan. This is the right-hand side fitting when the cooler is sitting fan side up.



### **ELCTRICAL CONNECTIONS**

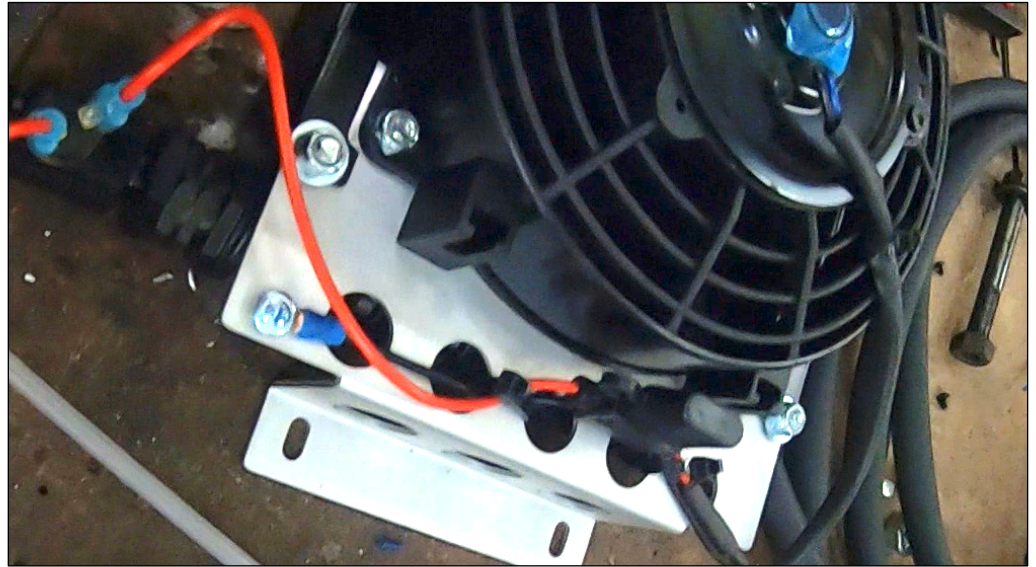
1. Fan motor wires connect to:
  - a. Black Wire: Ground to the mounting bracket using a self-taping screw in the orientation in the picture.
  - b. Blue Wire: Connect to the Temperature Sensor with 10-amp inline fuse in between.
2. Remaining Temperature Sensor connection will be wired and routed to the van's starter. This length of wire needs to be protected with appropriate wire cover.
3. It is essential the temperature sensor is installed facing down (towards the ground); otherwise, it will interfere with the frame rails when mounting.



These instructions and the images herein are proprietary. Any unauthorized reproduction is prohibited.

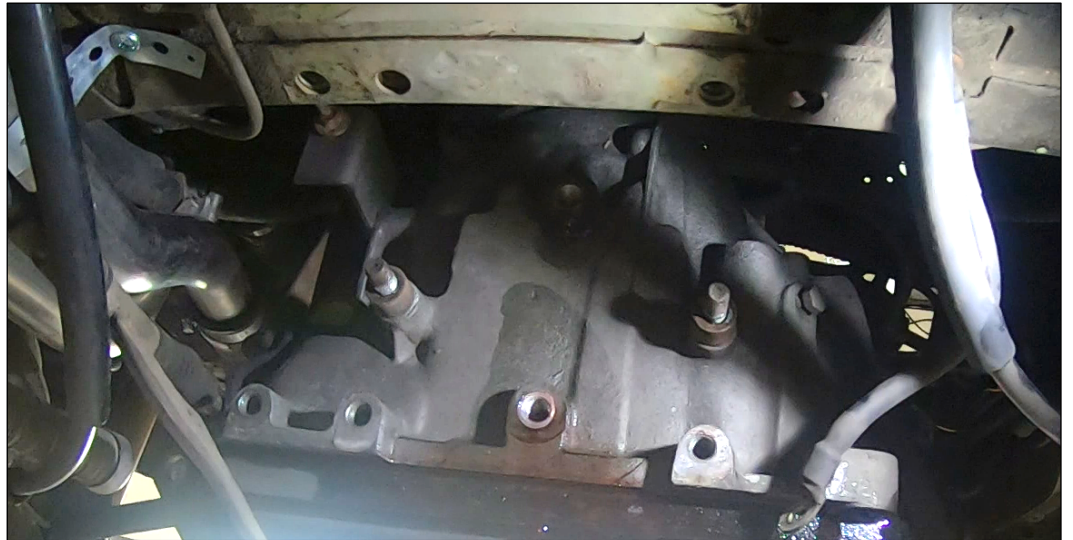
## **AUTOMATIC TRANSMISSION COOLER FAN INSTALLATION INSTRUCTIONS**

4. Zip-tie the wire and fuse holder to the mounting bracket.



### **CONNECTING TRANSMISSION COOLER HOSES**

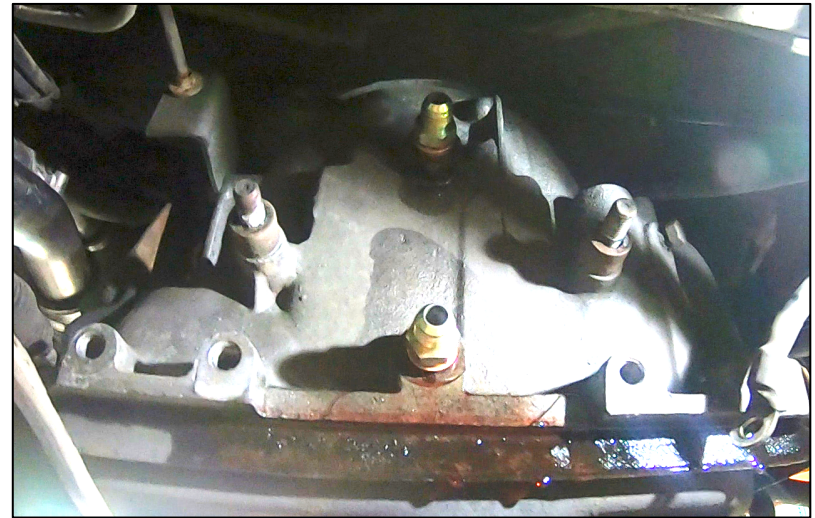
1. Support transmission.
2. Remove transmission mount and factory A/T cooler.



These instructions and the images herein are proprietary. Any unauthorized reproduction is prohibited.

## **AUTOMATIC TRANSMISSION COOLER FAN INSTALLATION INSTRUCTIONS**

3. Install 12mm A/T fittings with 12 x 16mm copper crush washers.



4. Install 90-degree fittings. Make sure they are oriented facing as shown.
5. Install both ends of the A/T hose to either of the A/T fittings you just installed. This will create a loop. You will cut the exact hose length after mounting the cooler and attaching the hoses to the vehicle.



These instructions and the images herein are proprietary. Any unauthorized reproduction is prohibited.

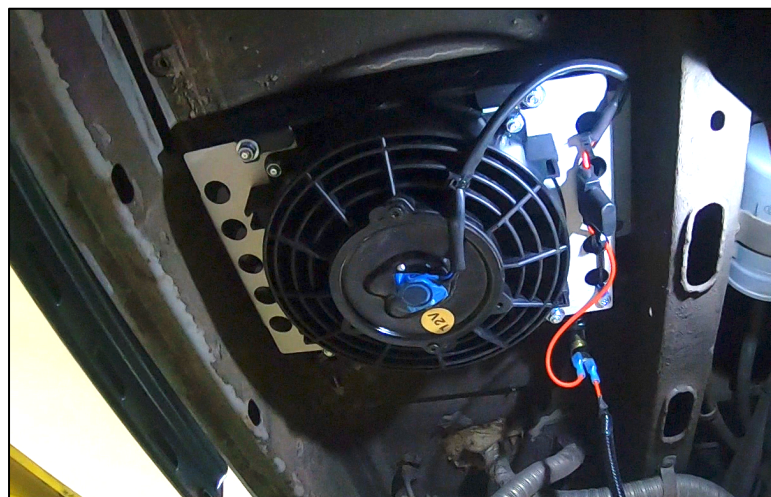
## **AUTOMATIC TRANSMISSION COOLER FAN INSTALLATION INSTRUCTIONS**

6. Reinstall transmission mount and remove the transmission support. The hoses will route to the right side of the mount when facing the back of the van.



### **INSTALLING COOLER FAN**

1. Install cooler fan in between the frame rails under the sliding door.
2. The inboard cooler mount can be attached with self-taping screws.
3. The outboard cooler mount attachment requires drilling through hardened metal before attaching with self-taping screws.

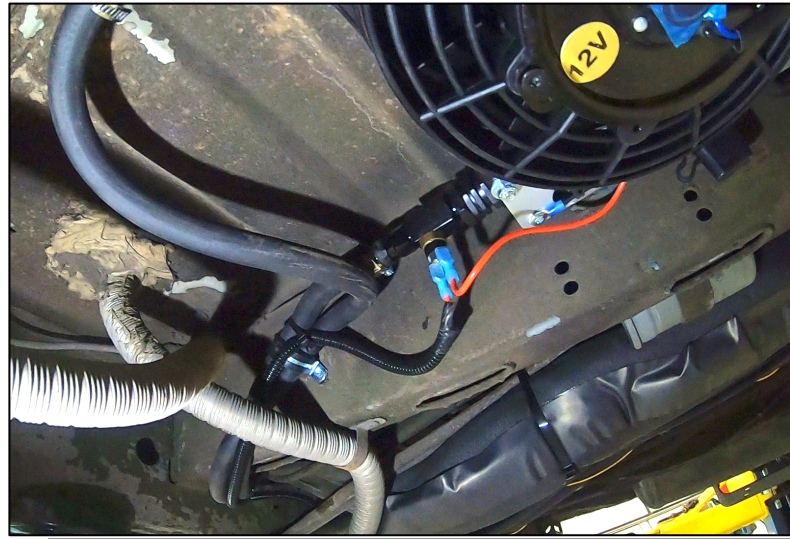
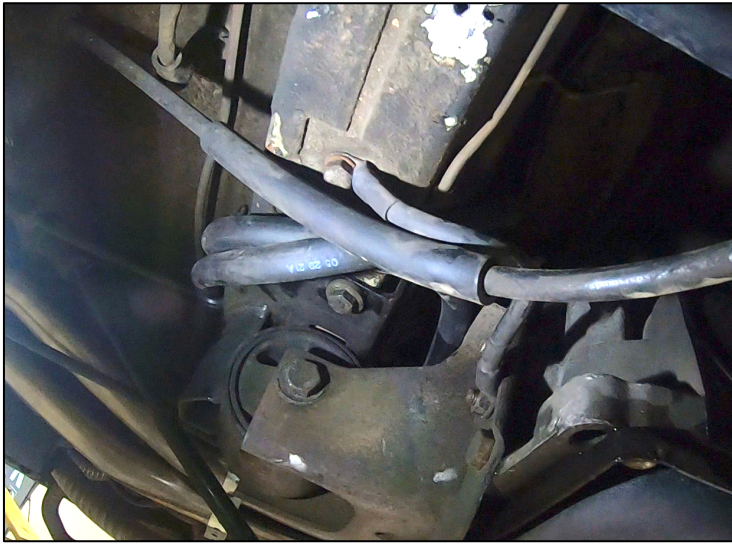


These instructions and the images herein are proprietary. Any unauthorized reproduction is prohibited.

## **AUTOMATIC TRANSMISSION COOLER FAN INSTALLATION INSTRUCTIONS**

### **ROUTING TRANSMISSION COOLER HOSES**

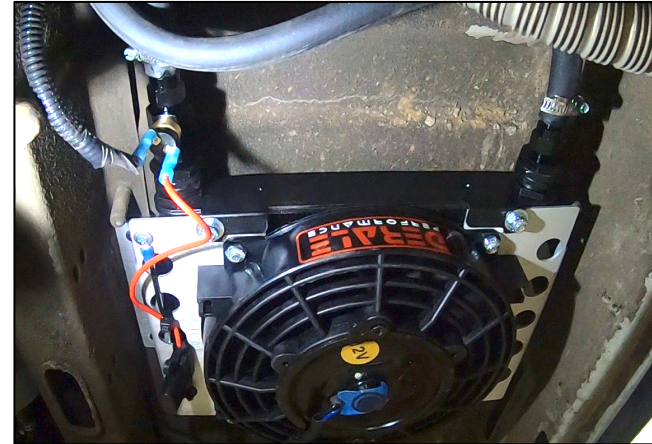
1. Run hoses over the top of the coolant pipes and to the cooler fan.
2. Once the exact location has been determined, attach the hoses to the frame with the insulated cable clamps and self-taping screws.



These instructions and the images herein are proprietary. Any unauthorized reproduction is prohibited.

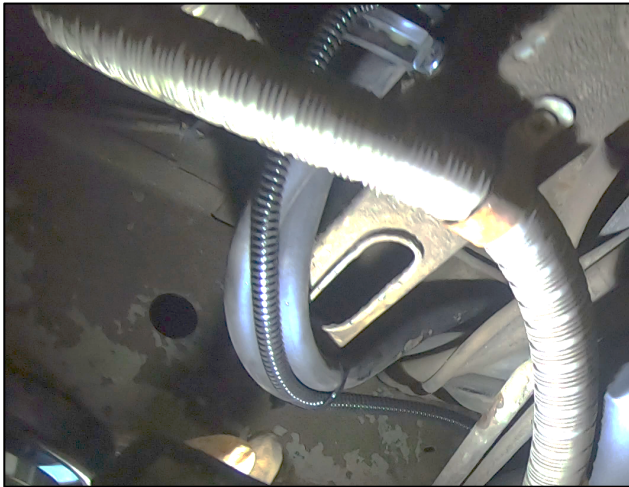
## AUTOMATIC TRANSMISSION COOLER FAN INSTALLATION INSTRUCTIONS

3. With the hoses routed and attached to the van, trim the hoses, and connect them to the cooler fan using the hose clamps. ***Make sure to connect the bottom hose that exits the transmission to the fitting with the Temperature Sensor.*** This is the hot side and triggers the sensor when the transmission coolant rises above 180 degrees Fahrenheit.



### ROUTING TRANSMISSION COOLER FAN WIRING

1. Route and attach cooler fan wiring to the A/T cooler hoses.
2. Connect wiring to the starter.



### REFILL AUTOMATIC TRANSMISSION FLUID

1. Refill transmission fluid according to Bentley Manual (37.9).